

COMPOSITE MECHANICAL PLAN

SCALE: 3/32" = 1'-0"

PLAN NOTES:

- 1 PROVIDE AND INSTALL ROOF MOUNTED 100% OUTSIDE AIR UNIT (HEATING AND COOLING AS SPECIFIED) UNIT TO BE LOCATED A MINIMUM OF 10'-0" AWAY FROM ANY ROOF EDGE. MOUNT ON ROOF CURB. REFER TO DETAIL CM2.2 FOR TYPICAL ROOF MOUNTING. COORDINATE UNIT LOCATION WITH OPENINGS IN PRE-CAST ROOF STRUCTURE AND WITH EXHAUST FANS. UNIT INTAKES ARE TO BE MINIMUM OF 12" AWAY FROM ANY PLUMBING VENT AND/OR EXHAUST OUTLET. UNITS TO BE COMPLETE WITH HAIL GUARDS ON COILS AND FACTORY MOUNTED CONVENIENCE OUTLETS. REFER TO TENANT IMPROVEMENTS DRAWINGS FOR ANY DUCTWORK BELOW ROOF AND FOR GAS PIPING AND CONNECTIONS.
- 2 PROVIDE AND INSTALL ROOF MOUNTED 100% OUTSIDE AIR UNIT (HEATING AND COOLING AS SPECIFIED) UNIT TO BE LOCATED A MINIMUM OF 10'-0" AWAY FROM ANY ROOF EDGE. MOUNT ON ROOF CURB. REFER TO DETAIL CM2.2 FOR TYPICAL ROOF MOUNTING. COORDINATE UNIT LOCATION WITH OPENINGS IN PRE-CAST ROOF STRUCTURE AND WITH EXHAUST FANS. UNIT INTAKES ARE TO BE MINIMUM OF 12" AWAY FROM ANY PLUMBING VENT AND/OR EXHAUST OUTLET. UNITS TO BE COMPLETE WITH HAIL GUARDS ON COILS AND FACTORY MOUNTED CONVENIENCE OUTLETS. REFER TO TENANT IMPROVEMENTS DRAWINGS FOR ANY DUCTWORK BELOW ROOF AND FOR GAS PIPING AND CONNECTIONS.
- 3 50x30 UNLINED DUCT TO LINE UP WITH OPENING IN PRE-CAST CONCRETE TEES (REFER TO STRUCTURAL DRAWING) DROP DUCT DOWN TO 12" BELOW BOTTOM OF TEE LESS AND LEAVE OPEN TO ROOM. REFER TO TENANT IMPROVEMENT DRAWINGS FOR ANY DUCTWORK TO BE CONNECTED TO DROPS.
- 4 PROVIDE TRANSITION AS REQUIRED TO DROP 24x18 UNLINED DUCT DOWN THRU STEEL ROOF JOISTS. REFER TO STRUCTURAL DRAWINGS FOR JOIST LOCATIONS. DROP DUCT DOWN TO BOTTOM OF JOISTS AND LEAVE OPEN TO ROOM. REFER TO TENANT IMPROVEMENT DRAWINGS FOR ANY DUCTWORK TO BE CONNECTED TO DROP.
- 5 PROVIDE AND INSTALL ROOF MOUNTED UNIT AS SPECIFIED. UNIT TO BE LOCATED A MINIMUM OF 10'-0" AWAY FROM ANY ROOF EDGE. MOUNT ON ROOF CURB. REFER TO DETAIL CM2.2 FOR TYPICAL ROOF MOUNTING. COORDINATE UNIT LOCATION WITH OPENINGS IN PRE-CAST ROOF STRUCTURE AND WITH EXHAUST FANS. UNIT INTAKES ARE TO BE MINIMUM OF 12" AWAY FROM ANY PLUMBING VENT AND/OR EXHAUST OUTLET. UNITS TO BE COMPLETE WITH HAIL GUARDS ON COILS AND FACTORY MOUNTED CONVENIENCE OUTLETS. DROP SUPPLY AND RETURN DUCTS DOWN TO BOTTOM OF ROOF JOISTS AND LEAVE OPEN TO ROOM. REFER TO TENANT IMPROVEMENT DRAWINGS FOR ANY DUCTWORK BELOW ROOF AND FOR GAS PIPING AND CONNECTIONS.
- 6 PROVIDE AND INSTALL ROOF MOUNTED UP BLAST EXHAUST FAN AS SPECIFIED. MOUNT ON ROOF CURB. PROVIDE DUCT TRANSITION IN CURB SPACE AS REQUIRED TO DROP 24x18 EXHAUST DUCT DOWN THRU ROOF. DROP DUCT TO 12" BELOW BOTTOM OF PRE-CAST CONCRETE TEE LESS OR METAL JOISTS. LEAVE OPEN TO ROOM. REFER TO DETAIL AM1.1 FOR TYPICAL INSTALLATION. REFER TO TENANT IMPROVEMENT DRAWINGS FOR ANY DUCTWORK AND/OR GRILLE TO BE CONNECTED TO DUCTWORK. ALL EXHAUST FANS TO BE 10'-0" MINIMUM AWAY FROM ROOF EDGE AND 10'-0" MINIMUM AWAY FROM ANY UNIT AIR INTAKE.
- 7 PROVIDE AND INSTALL ROOF MOUNTED DOWNFLOW EXHAUST FAN AS SPECIFIED. MOUNT ON ROOF CURB. DROP 14x14 EXHAUST DUCT DOWN THRU ROOF TO BOTTOM OF STEEL JOISTS. LEAVE OPEN TO ROOM. REFER TO DETAIL BM1.1 FOR TYPICAL INSTALLATION. REFER TO TENANT IMPROVEMENT DRAWINGS FOR ANY DUCTWORK AND/OR GRILLE TO BE CONNECTED TO DUCTWORK.
- 8 TYPICAL OPENING IN PRE-CAST CONCRETE WALLS. REFER TO STRUCTURAL DRAWINGS. ALL TRADES TO COORDINATE WITH EACH OTHER. REFER TO TENANT IMPROVEMENT DRAWINGS FOR ALL PIPING AND DUCTWORK TO BE INSTALLED.
- 9 4" PLUMBING VENT UP THRU ROOF. KEEP VTR 3'-0" MINIMUM FROM EDGE OF ROOF. REFER TO SHEET P0.1 FOR PIPING TO BE INSTALLED BELOW ROOF AND FLOOR. COORDINATE VTR LOCATIONS WITH ROOF MOUNTED EQUIPMENT TO KEEP 10'-0" MINIMUM DISTANCE FROM AN EQUIPMENT AIR INTAKE LOCATIONS.
- 10 PROVIDE AND INSTALL ROOF DRAIN AND OVERFLOW DRAINS AS SPECIFIED. MOUNT IN ROOF. REFER TO TENANT IMPROVEMENT DRAWINGS FOR PIPING BLOW ROOF.
- 11 RISE 14" DIA. DISCHARGE DUCT UP THRU ROOF. COORDINATE DUCT LOCATION WITH CONCRETE TEE ROOF AND CORE DRILL AS REQUIRED TO INSTALL DUCT. REFER TO SHEET M1.2 FOR CONTINUATION OF DUCTWORK BELOW ROOF.
- 12 ROOF MOUNTED EXHAUST FAN AND ROOF CURB BY EQUIPMENT SUPPLIER. RISE 14" DIA. DISCHARGE DUCT UP TO 10'-0" MINIMUM ABOVE ROOF LEVEL WITH WEATHER CAP. SUPPORT STACK WITH GUY WIRES AS NECESSARY.

NOT FOR CONSTRUCTION PURPOSES

**nbwarchitects p.a.**  
ARCHITECTURE PLANNING / INTERIORS  
KEVIN R. BODILY, AIA, JAMES H. WYATT, AIA, GEOFF L. NELSON, AIA  
930 JOSH BEERS PERIMERY / P.O. BOX 2212 / IDAHO FALLS, IDAHO 83403-2212  
(208) 208-5222 (OFF) 208-522-8778 (F) 208-522-8778

BUILDING SHELL  
**INTERMOUNTAIN PACKING**  
1096 E IONA ROAD  
IDAHO FALLS, IDAHO 83401  
COMPOSITE MECHANICAL PLAN

PROJECT:  
20011

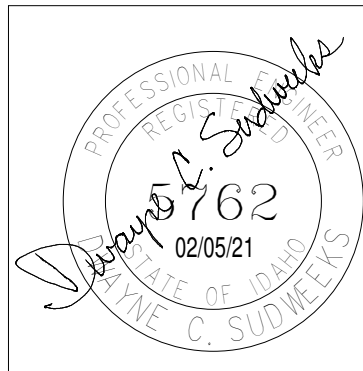
REVISIONS

PROJECT NO.  
20011  
DATE:  
DECEMBER 2020  
DRAWN BY:

CHECKED BY:

DRAWING NO.:

**M0.1**



**Engineered Systems Associates**  
1355 EAST CENTER  
POCATELLO, IDAHO 83201  
PHONE: (208) 233-0501  
FAX: (208) 233-0529  
EMAIL: esa@engsysidaho.com  
1355 EAST CENTER  
POCATELLO, IDAHO 83201

ROOF TOP HEATING & AIR CONDITIONING UNIT SCHEDULE

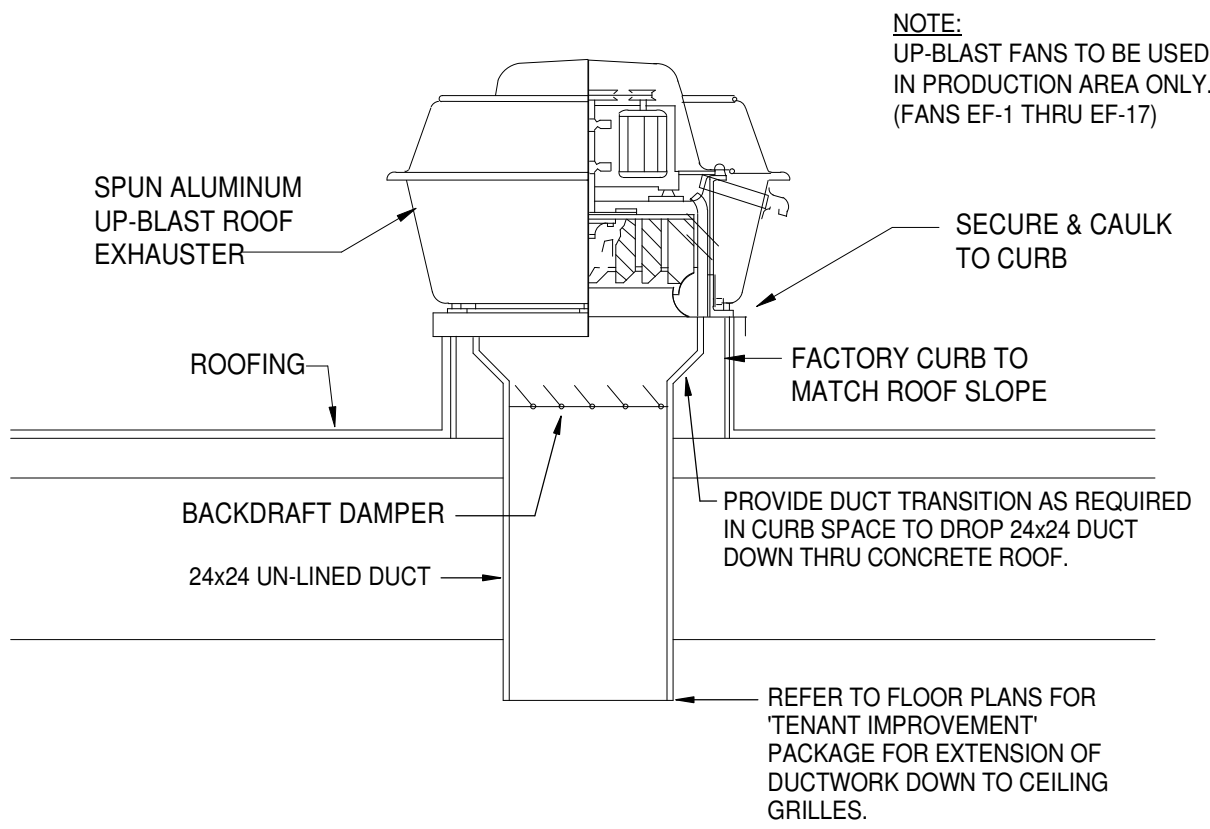
SYM.	CFM	MIN. O.A.	SP.	BLOWER H.P.	SEER	CHAR	MCA	MOP	WEIGHT	GAS CONN.	HEATING @ ELEV. MBH IN	MBH OUT	EAT	LAT	COOLING MBH	EAT	WB	REMARKS	①
RT 1	1800	400	50"	1	14.2	480/603	14.0	20	1200#	1/2"	130	104	65°F	107°F	61.0	95°F	67°F	TRANE MODEL YHC-060-E4 WITH FULL ECONOMIZER AND COIL GUARDS. MOUNT ON ROOF CURB.	
RT 2	1800	500	50"	1	14.2	480/603	14.0	20	1200#	1/2"	120	96	65°F	110°F	49.9	95°F	67°F	TRANE MODEL YHC-060-E4 WITH FULL ECONOMIZER AND COIL GUARDS. MOUNT ON ROOF CURB.	
RT 3	2400	600	50"	1	14.5	480/603	15.0	20	1400#	3/4"	150	120	65°F	104°F	72.0	95°F	67°F	TRANE MODEL YHC-072-E4 WITH FULL ECONOMIZER AND COIL GUARDS. MOUNT ON ROOF CURB.	
RT 4	3000	300	50"	1	14.5	480/603	20.0	25	1500#	3/4"	200	160	65°F	106°F	92.0	95°F	67°F	TRANE MODEL YHC-092-E4 WITH FULL ECONOMIZER AND COIL GUARDS. MOUNT ON ROOF CURB.	
RT 5	1980	400	50"	1	14.2	480/603	14.0	20	1200#	1/2"	130	104	65°F	107°F	61.0	95°F	67°F	TRANE MODEL YHC-060-E4 WITH FULL ECONOMIZER AND COIL GUARDS. MOUNT ON ROOF CURB.	
RT 6	1800	300	50"	1	14.2	480/603	14.0	20	1200#	1/2"	130	104	65°F	107°F	61.0	95°F	67°F	TRANE MODEL YHC-060-E4 WITH FULL ECONOMIZER AND COIL GUARDS. MOUNT ON ROOF CURB.	
RT 7	1600	800	50"	1	14.2	480/603	14.0	20	1200#	1/2"	120	96	65°F	110°F	49.9	95°F	67°F	TRANE MODEL YHC-060-E4 WITH FULL ECONOMIZER AND COIL GUARDS. MOUNT ON ROOF CURB.	
RT 8	1800	500	50"	1	14.2	480/603	14.0	20	1200#	1/2"	120	96	65°F	110°F	49.9	95°F	67°F	TRANE MODEL YHC-060-E4 WITH FULL ECONOMIZER AND COIL GUARDS. MOUNT ON ROOF CURB.	
① UNIT TO BE SUPPLIED WITH FACTORY FURNISHED CONVENIENCE OUTLET AND DISCONNECT.																			

DEDICATED OUTDOOR AIR UNIT SCHEDULE (DIRECT GAS FIRED)

SYM.	O.A. CFM	MIN. CFM	SP.	BLOWER H.P.	CHAR	MCA	MOP	WEIGHT	GAS CONN.	EER	HEATING MBH IN	EAT	LAT	COOLING MBH	EAT	LAT	REMARKS	①	②	③	④
OA 1	7800	4800	.75"	7-1/2	480/603	25	45A	2650#	1-1/2"	9.7	774	0°F	74°F	---	---	---	ICE WESTERN MODEL IDF-118 WITH FACTORY FURNISHED ROOF CURB				
OA 2	12,600	4800	.75"	7-1/2	480/603	25	45A	3350#	1-1/2"	9.1	1250	0°F	74°F	---	---	---	ICE WESTERN MODEL IDF-120 WITH FACTORY FURNISHED ROOF CURB				
OA 3	6400	4100	.75"	7-1/2	480/603	14	25A	2450#	1-1/2"	10	635	0°F	74°F	---	---	---	ICE WESTERN MODEL IDF-115 WITH FACTORY FURNISHED ROOF CURB				
OA 4	12,600	4800	.75"	15	480/603	168	200A	12,000#	1-1/2"	12	1190	0°F	74°F	750	95°F	40°F	ICE WESTERN MODEL IDF-120-DX62 WITH MATCHING DX COOLING COIL AND FACTORY FURNISHED ROOF CURB				
OA 5	12,600	4800	.75"	15	480/603	168	200A	12,000#	1-1/2"	12	1190	0°F	74°F	750	95°F	40°F	ICE WESTERN MODEL IDF-120-DX62 WITH MATCHING DX COOLING COIL AND FACTORY FURNISHED ROOF CURB				
OA 6	12,600	4800	.75"	15	480/603	168	200A	12,000#	1-1/2"	12	1190	0°F	74°F	750	95°F	40°F	ICE WESTERN MODEL IDF-120-DX62 WITH MATCHING DX COOLING COIL AND FACTORY FURNISHED ROOF CURB				
OA 7	6400	4100	.75"	10	480/603	100	125A	8300#	1-1/2"	12	635	0°F	74°F	395	95°F	40°F	ICE WESTERN MODEL IDF-115-DX33 WITH MATCHING DX COOLING COIL AND FACTORY FURNISHED ROOF CURB				
OA 8	3000	1500	.75"	3	480/603	49	70A	4400#	1-1/2"	12	300	0°F	74°F	185	95°F	40°F	ICE WESTERN MODEL IDF-115-DX15 WITH MATCHING DX COOLING COIL AND FACTORY FURNISHED ROOF CURB				
OA 9	5000	1500	.75"	5	480/603	10	25A	2450#	1-1/2"	10	496	0°F	74°F	---	---	---	ICE WESTERN MODEL IDF-115 WITH FACTORY FURNISHED ROOF CURB				
OA 10	3000	1500	.75"	3	480/603	7	15A	2450#	1-1/2"	10	300	0°F	74°F	---	---	---	ICE WESTERN MODEL IDF-112 WITH FACTORY FURNISHED ROOF CURB				
① PROVIDE MERV-14 FILTERS WITH UNIT																					
② PROVIDE VFD WITH EACH UNIT.																					
③ PROVIDE SMOKE DETECTOR IN DUCT FOR UNIT SHUT-DOWN.																					
④ UNIT TO BE SUPPLIED WITH FACTORY FURNISHED CONVENIENCE OUTLET AND DISCONNECT.																					

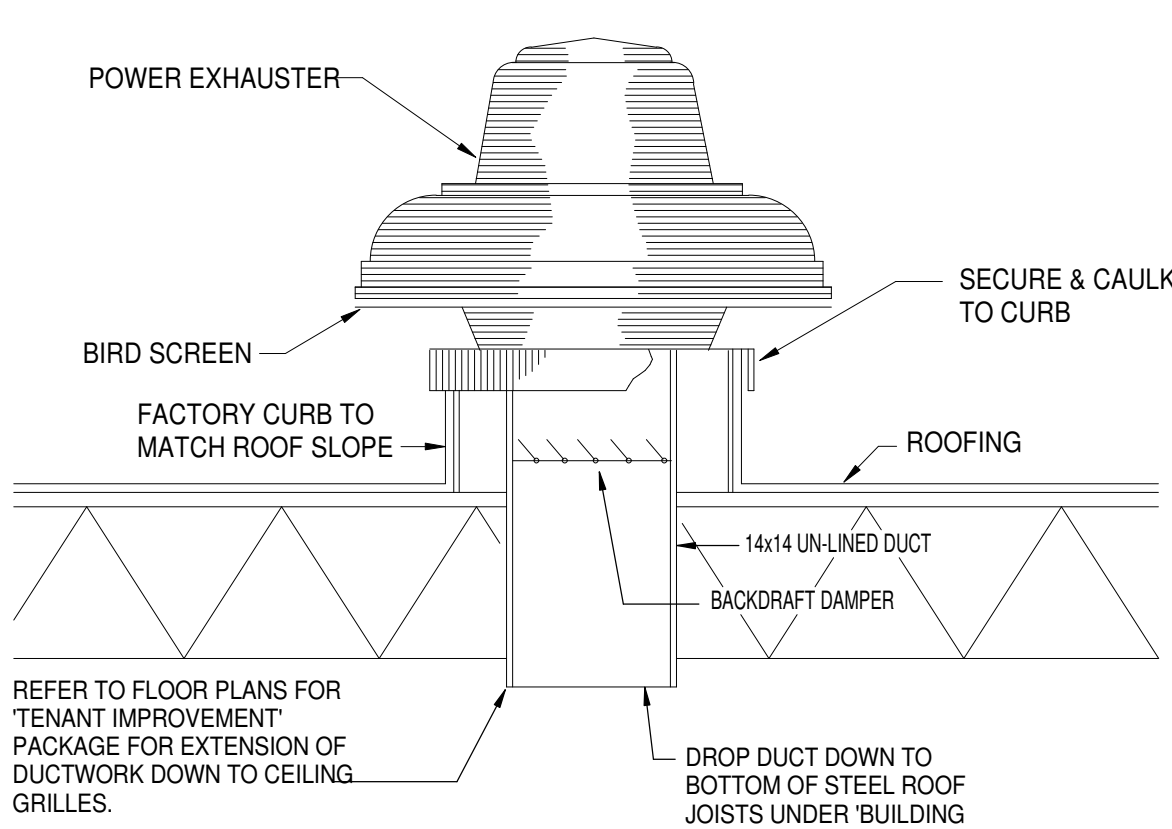
EXHAUST FAN SCHEDULE

SYM.	TYPE	C.F.M.	S.P.E.	h.p.	CHAR.	R.P.M.	CONTROL	WEIGHT	DUCT SIZE	REMARKS
EF 1	ROOF TOP UP-BLAST	2400	50"	1/2	120601	790	INTERLOCK WITH EQUIP.	<200#	18 x 18	TWIN CITY MODEL 180B BCRU WITH BACK-DRAFT DAMPER. MOUNT ON ROOF CURB. SEE TYPICAL DETAIL A.M0.2
EF 2	ROOF TOP UP-BLAST	6400	50"	1-1/2	206603	770	INTERLOCK WITH OA-2	<250#	28 x 28	TWIN CITY MODEL 240B BCRU WITH BACK-DRAFT DAMPER. MOUNT ON ROOF CURB. SEE TYPICAL DETAIL A.M0.2
EF 3	ROOF TOP UP-BLAST	4000	50"	3/4	120601	770	INTERLOCK WITH OA-1	<250#	28 x 28	TWIN CITY MODEL 210B BCRU WITH BACK-DRAFT DAMPER. MOUNT ON ROOF CURB. SEE TYPICAL DETAIL A.M0.2
EF 4	ROOF TOP UP-BLAST	6400	50"	1-1/2	206603	770	INTERLOCK WITH OA-2	<250#	28 x 28	TWIN CITY MODEL 240B BCRU WITH BACK-DRAFT DAMPER. MOUNT ON ROOF CURB. SEE TYPICAL DETAIL A.M0.2
EF 5	ROOF TOP UP-BLAST	3200	50"	1/2	120601	940	INTERLOCK WITH OA-10	<200#	18 x 18	TWIN CITY MODEL 180B BCRU WITH BACK-DRAFT DAMPER. MOUNT ON ROOF CURB. SEE TYPICAL DETAIL A.M0.2
EF 6	ROOF TOP UP-BLAST	4000	50"	3/4	120601	770	INTERLOCK WITH OA-1	<250#	28 x 28	TWIN CITY MODEL 210B BCRU WITH BACK-DRAFT DAMPER. MOUNT ON ROOF CURB. SEE TYPICAL DETAIL A.M0.2
EF 7	ROOF TOP UP-BLAST	5000	50"	1-1/2	206603	660	INTERLOCK WITH OA-3	<250#	28 x 28	TWIN CITY MODEL 240B BCRU WITH BACK-DRAFT DAMPER. MOUNT ON ROOF CURB. SEE TYPICAL DETAIL A.M0.2
EF 8	ROOF TOP UP-BLAST	6000	50"	1-1/2	206603	750	INTERLOCK WITH OA-4	<250#	28 x 28	TWIN CITY MODEL 240B BCRU WITH BACK-DRAFT DAMPER. MOUNT ON ROOF CURB. SEE TYPICAL DETAIL A.M0.2
EF 9	ROOF TOP UP-BLAST	6000	50"	1-1/2	206603	750	INTERLOCK WITH OA-4	<250#	28 x 28	TWIN CITY MODEL 240B BCRU WITH BACK-DRAFT DAMPER. MOUNT ON ROOF CURB. SEE TYPICAL DETAIL A.M0.2
EF 10	ROOF TOP UP-BLAST	6000	50"	1-1/2	206603	750	INTERLOCK WITH OA-5	<250#	28 x 28	TWIN CITY MODEL 240B BCRU WITH BACK-DRAFT DAMPER. MOUNT ON ROOF CURB. SEE TYPICAL DETAIL A.M0.2
EF 11	ROOF TOP UP-BLAST	6000	50"	1/2	206603	750	INTERLOCK WITH OA-5	<250#	28 x 28	TWIN CITY MODEL 240B BCRU WITH BACK-DRAFT DAMPER. MOUNT ON ROOF CURB. SEE TYPICAL DETAIL A.M0.2
EF 12	ROOF TOP UP-BLAST	3600	50"	1/2	120601	710	INTERLOCK WITH EQUIP.	<250#	28 x 28	TWIN CITY MODEL 210B BCRU WITH BACK-DRAFT DAMPER. MOUNT ON ROOF CURB. SEE TYPICAL DETAIL A.M0.2
EF 13	ROOF TOP UP-BLAST	6000	50"	1-1/2	206603	750	INTERLOCK WITH OA-6	<250#	28 x 28	TWIN CITY MODEL 240B BCRU WITH BACK-DRAFT DAMPER. MOUNT ON ROOF CURB. SEE TYPICAL DETAIL A.M0.2
EF 14	ROOF TOP UP-BLAST	6000	50"	1-1/2	206603	750	INTERLOCK WITH OA-6	<250#	28 x 28	TWIN CITY MODEL 240B BCRU WITH BACK-DRAFT DAMPER. MOUNT ON ROOF CURB. SEE TYPICAL DETAIL A.M0.2
EF 15	ROOF TOP UP-BLAST	6000	50"	1-1/2	206603	750	INTERLOCK WITH OA-7	<250#	28 x 28	TWIN CITY MODEL 240B BCRU WITH BACK-DRAFT DAMPER. MOUNT ON ROOF CURB. SEE TYPICAL DETAIL A.M0.2
EF 16	ROOF TOP UP-BLAST	3000	50"	1/2	120601	660	INTERLOCK WITH EQUIPMENT	<250#	28 x 28	TWIN CITY MODEL 210B BCRU WITH BACK-DRAFT DAMPER. MOUNT ON ROOF CURB. SEE TYPICAL DETAIL A.M0.2
EF 17	ROOF TOP UP-BLAST	3000	50"	1/2	120601	660	INTERLOCK WITH OA-8	<250#	28 x 28	TWIN CITY MODEL 210B BCRU WITH BACK-DRAFT DAMPER. MOUNT ON ROOF CURB. SEE TYPICAL DETAIL A.M0.2
EF 18	ROOF TOP DOWN-FLOW	400	25"	1/4	120601	770	GAS DETECTION SENSOR	<100#	14 x 14	TWIN CITY MODEL 110B BCRD WITH BACK-DRAFT DAMPER. MOUNT ON ROOF CURB. SEE TYPICAL DETAIL B.M0.2
EF 19	ROOF TOP DOWN-FLOW	600	25"	1/4	120601	900	DDC CONTROL SYSTEM	<100#	14 x 14	TWIN CITY MODEL 110B BCRD WITH BACK-DRAFT DAMPER. MOUNT ON ROOF CURB. SEE TYPICAL DETAIL B.M0.2
EF 20	ROOF TOP DOWN-FLOW	500	25"	1/4	120601	800	DDC CONTROL SYSTEM	<100#	14 x 14	TWIN CITY MODEL 110B BCRD WITH BACK-DRAFT DAMPER. MOUNT ON ROOF CURB. SEE TYPICAL DETAIL B.M0.2
EF 21	ROOF TOP DOWN-FLOW	700	25"	1/4	120601	950	DDC CONTROL SYSTEM	<100#	14 x 14	TWIN CITY MODEL 110B BCRD WITH BACK-DRAFT DAMPER. MOUNT ON ROOF CURB. SEE TYPICAL DETAIL B.M0.2
EF 22	ROOF TOP DOWN-FLOW	700	25"	1/4	120601	950	DDC CONTROL SYSTEM	<100#	14 x 14	TWIN CITY MODEL 110B BCRD WITH BACK-DRAFT DAMPER. MOUNT ON ROOF CURB. SEE TYPICAL DETAIL B.M0.2
EF 23	ROOF TOP DOWN-FLOW	600	25"	1/4	120601	900	DDC CONTROL SYSTEM	<100#	14 x 14	TWIN CITY MODEL 110B BCRD WITH BACK-DRAFT DAMPER. MOUNT ON ROOF CURB. SEE TYPICAL DETAIL B.M0.2
EF 24	ROOF TOP DOWN-FLOW	700	25"	1/4	120601	950	DDC CONTROL SYSTEM	<100#	14 x 14	TWIN CITY MODEL 110B BCRD WITH BACK-DRAFT DAMPER. MOUNT ON ROOF CURB. SEE TYPICAL DETAIL B.M0.2
EF 25	ROOF TOP DOWN-FLOW	700	25"	1/4	120601	950	COOLING STAT	<100#	14 x 14	TWIN CITY MODEL 110B BCRD WITH BACK-DRAFT DAMPER. MOUNT ON ROOF CURB. SEE TYPICAL DETAIL B.M0.2
EF 26	ROOF TOP DOWN-FLOW	700	25"	1/4	120601	950	CO2 SENSOR	<100#	14 x 14	TWIN CITY MODEL 110B BCRD WITH BACK-DRAFT DAMPER. MOUNT ON ROOF CURB. SEE TYPICAL DETAIL B.M0.2
EF 27	ROOF TOP DOWN-FLOW	700	25"	1/4	120601	950	CO2 SENSOR	<100#	14 x 14	TWIN CITY MODEL 110B BCRD WITH BACK-DRAFT DAMPER. MOUNT ON ROOF CURB. SEE TYPICAL DETAIL B.M0.2
EF 28	ROOF TOP UP-BLAST	2000	50"	1/2	120601	770	INTERLOCK WITH OA-3	<200#	18 x 18	TWIN CITY MODEL 180B BCRU WITH BACK-DRAFT DAMPER. MOUNT ON ROOF CURB. SEE TYPICAL DETAIL A.M0.2
EF 29	ROOF TOP UP-BLAST	3000	50"	1-1/2	206603	750	INTERLOCK WITH EQUIPMENT	<250#	28 x 28	TWIN CITY MODEL 240B BCRU WITH BACK-DRAFT DAMPER. MOUNT ON ROOF CURB. SEE TYPICAL DETAIL A.M0.2
EF 30	ROOF TOP UP-BLAST	5000	50"	1	206603	660	INTERLOCK WITH OA-9	<250#	28 x 28	TWIN CITY MODEL 240B BCRU WITH BACK-DRAFT DAMPER. MOUNT ON ROOF CURB. SEE TYPICAL DETAIL A.M0.2
① PROVIDE DUCT TRANSITION AS REQUIRED IN ROOF CURB SPACE TO DROP 24 x 24 (UN-LINED) DUCT THRU CONCRETE TEE ROOF.										
② PROVIDE VFD WITH EACH UNIT.										



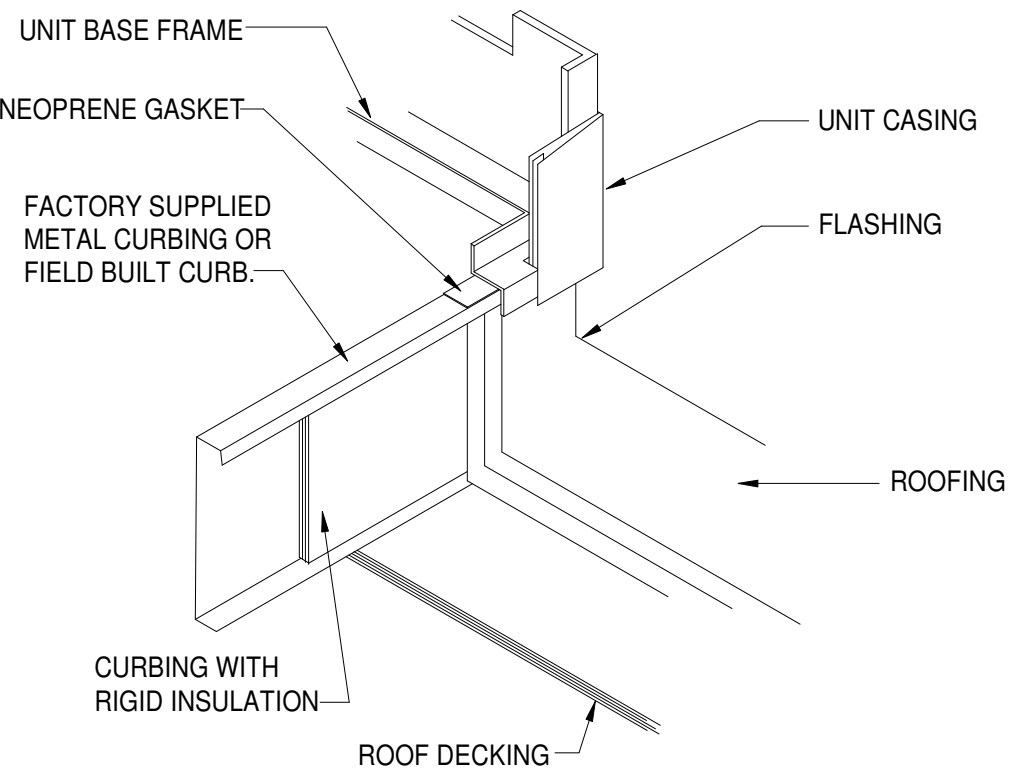
A UP-BLAST EXHAUST FAN DETAIL

NO SCALE





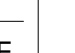

B DOWNFLOW EXHAUST FAN DETAIL

NO SCALE



C ROOF MOUNTING DETAIL

NO SCALE

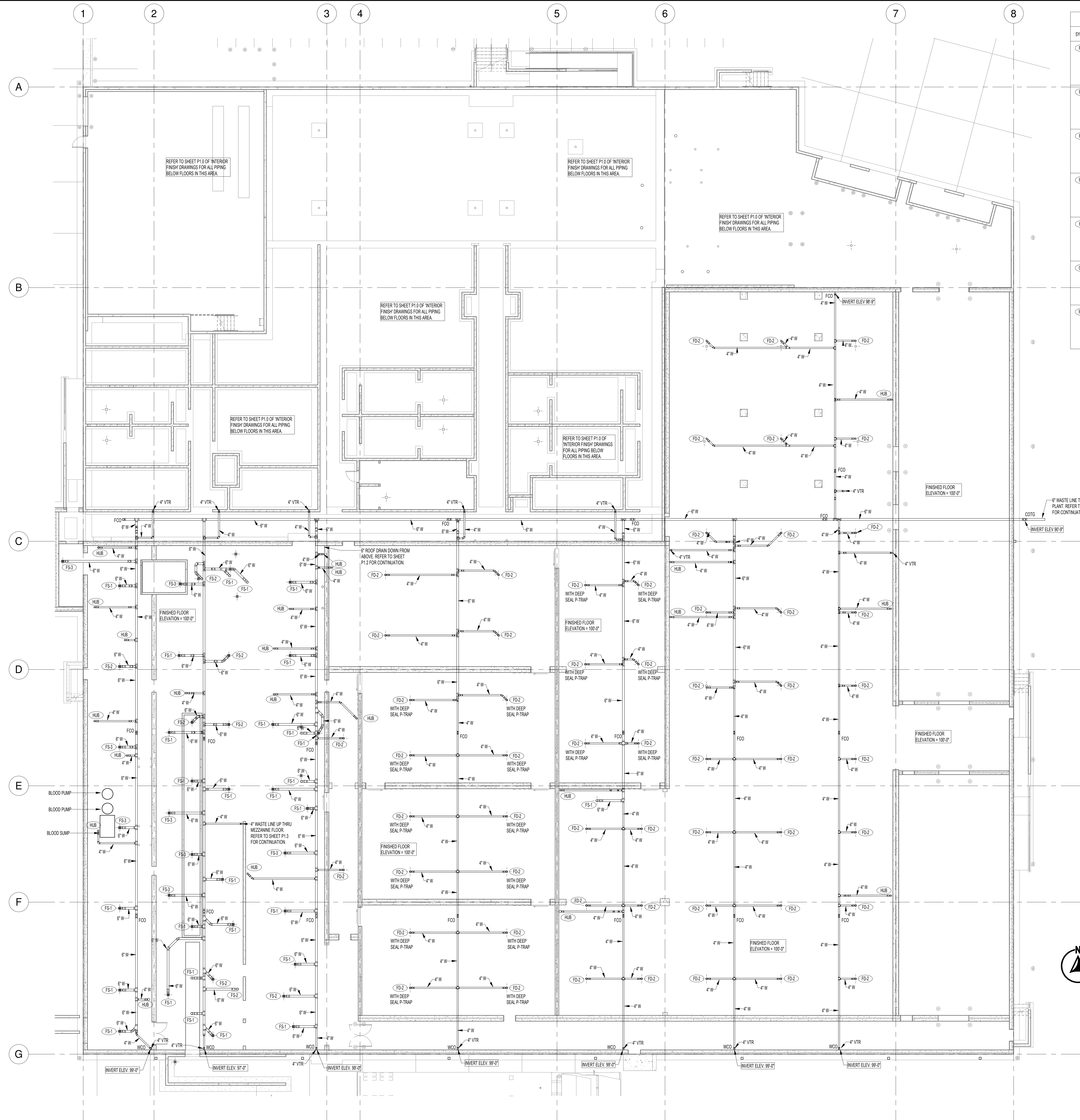
DIMENSION OF LONGEST SIDE, INCHES	SHEET METAL GAUGE (ALL FOUR SIDES)	MINIMUM REINFORCING ANGLE SIZE AND MAXIMUM LONGITUDINAL SPACING BETWEEN TRANSVERSE JOINTS &/OR INTERMEDIATE REINFORCING	TRANSVERSE REINFORCING (1)				
			AT JOINTS				
			MIN. H. IN.				
	RECOMMENDED GAUGE	RECOMMENDED GAUGE	RECOMMENDED GAUGE	RECOMMENDED GAUGE			
UP THRU 12	26	NONE REQUIRED	1	26	26	24	24
13-18	24	NONE REQUIRED	1	24	24	24	24
19-30	24	1"x1"x1/8" @ 60 IN	1	-	24	24	24
31-42	22	1"x1"x1/8" @ 60 IN	1	-	-	22	22

(1) TRANSVERSE REINFORCING SIZE IS DETERMINED BY DIMENSION OF SIDE TO WHICH ANGLE IS APPLIED.

D DUCT CONSTRUCTION DETAIL

NO SCALE





SYMBOL	DESCRIPTION	HOT	COLD	WASTE	TRAP	VENT	GAS	AIR
<b>(FD-2)</b>	3" FLOOR DRAIN - JOSAM HEAVY-DUTY ADJUSTABLE FLOOR DRAIN WITH 3/8" STAINLESS STEEL CONSTRUCTION, SEDIMENT BUCKET AND 4" DEEP SEAL P-TRAP TO CONNECT TO JOSAM PUSH-FIT STAINLESS STEEL DRAINAGE PIPE.	—	—	3"	4"	—	—	—
<b>(FS-1)</b>	FLOOR SINK WITH FULL GRATE - JOSAM WITH FULL GRATE AND 8" DEEP SUMP, 3/8" STAINLESS STEEL CONSTRUCTION, SUSPENDED SEDIMENT BUCKET AND 6" DEEP SEAL P-TRAP TO CONNECT TO JOSAM PUSH-FIT STAINLESS STEEL DRAINAGE PIPE.	—	—	4"	6"	—	—	—
<b>(FS-2)</b>	FLOOR SINK WITH 1/2 GRATE - JOSAM WITH HALF GRATE AND 8" DEEP SUMP, 3/8" STAINLESS STEEL CONSTRUCTION, SUSPENDED SEDIMENT BUCKET AND 6" DEEP SEAL P-TRAP TO CONNECT TO JOSAM PUSH-FIT STAINLESS STEEL DRAINAGE PIPE.	—	—	4"	6"	—	—	—
<b>(FS-3)</b>	FLOOR SINK WITH 3/4 GRATE - JOSAM WITH THREE-QUARTER GRATE AND 8" DEEP SUMP, 3/8" STAINLESS STEEL CONSTRUCTION, SUSPENDED SEDIMENT BUCKET AND 6" DEEP SEAL P-TRAP TO CONNECT TO JOSAM PUSH-FIT STAINLESS STEEL DRAINAGE PIPE.	—	—	4"	6"	—	—	—
<b>(HUB)</b>	3" HUB DRAIN, PROVIDE 3" 3/8" STAINLESS STEEL WASTE LINE THRU FLOOR WITH 4" OPEN-HUB DRAIN FITTING, 4" INLET AND 3" OUTLET; PROVIDE 4" DEEP SEAL P-TRAP TO CONNECT TO JOSAM PUSH-FIT STAINLESS STEEL DRAINAGE PIPE.	—	—	3"	4"	—	—	—
<b>(OF-1)</b>	4" OVERFLOW DRAIN - JAY R. SMITH MODEL 1080 WITH RECEIVER, 2" HIGH WATER DAM, UNDER DECK CLAMP, GRAVEL STOP, DOME STRAINER AND 4" DRAIN LINE CONNECTION.	—	—	4"	4"	—	—	—
<b>(RD-1)</b>	4" ROOF DRAIN - JAY R. SMITH MODEL 1010 WITH RECEIVER UNDER DECK CLAMP, GRAVEL STOPS, DOME STRAINER, AND 4" DRAIN LINE CONNECTION.	—	—	4"	4"	—	—	—

**nbwarchitects p.a.**  
ARCHITECTURE • PLANNING • INTERIORS  
KEVIN R. BODILY A.I.A., JAMES H. WYATT A.I.A., GEOFF L. NIELSON A.I.A.  
908 JENNA BOULEVARD, SUITE 200 • DALLAS, TEXAS 75219 • (214) 760-1234  
WWW.NBWARCHITECTS.COM

BUILDING SHELL  
**INTERMOUNTAIN PACKING**  
1096 E IONA ROAD  
IDAHO FALLS, IDAHO 83401

PROJECT:

## REVISIONS

PROJECT NO.  
20011  
DATE:  
DECEMBER 2020  
DRAWN BY:  
  
CHECKED BY:

DRAWING NO.:

P0.1

